



# Optimum management for resources and individuals

Planit University is a programme that enables us to obtain maximum benefit from our resources (teachers, classrooms, laboratories, seminars). It is able to calculate the best distribution for them and gives us many possibilities, but also the day-to-day running of our faculty with management of resources (reservation of rooms, reservation of equipment, management of events, management of supply teachers), to the extent of being able to display all the resources and how they are being used in all the campuses and the whole university.



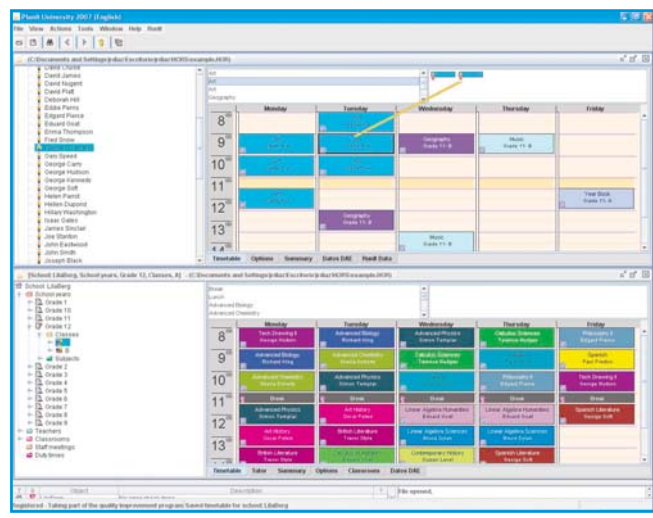
# It calculates

Planit University calculates the best distribution for our resources (teachers, classrooms, laboratories, seminars) and provides us with many options for obtaining maximum benefit from them.

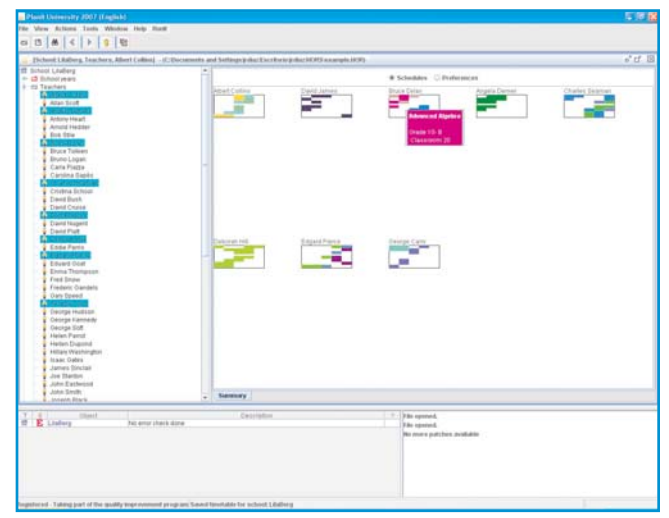
An attractive and intuitive graphic environment



Planit University is designed to be a useful, effective and very easy-to-use tool - with functions that facilitate the input of data and a solution to timetables, such as the simultaneous display of as many timetables as you wish or the arrangement of variable sessions. It can also display different resources on the same screen (timetables of teachers, courses or classrooms).



Simultaneous display of teacher and course timetables



Simultaneous display of timetables of different teachers

The purpose is to show those changes that affect different elements: the updating of a change in a display automatically acts on the other windows.

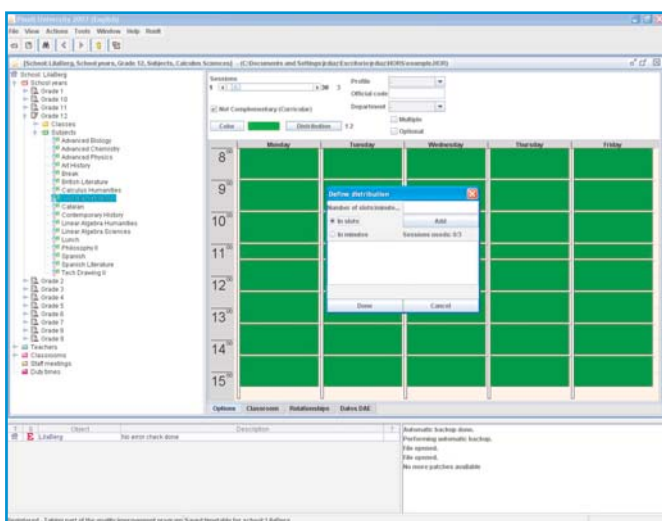


## Course management

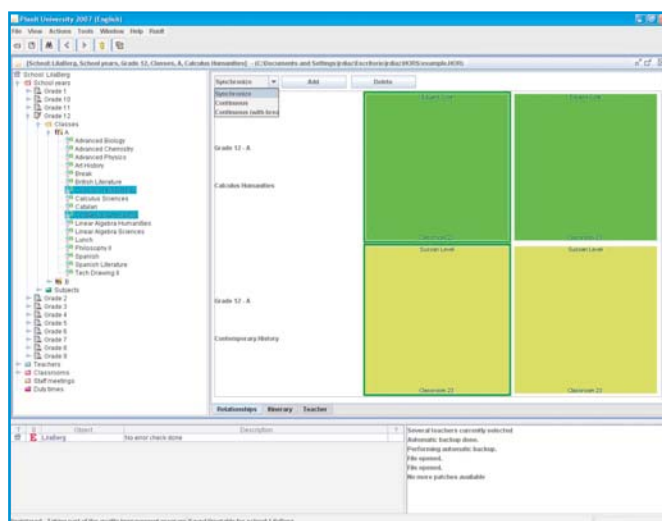


It Calculates

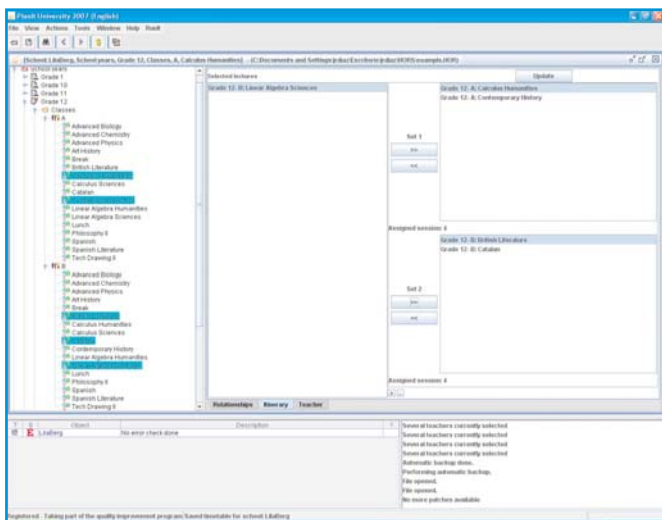
The programme meets the demand for flexibility in terms of timetables, with the capacity to organize different courses and faculties, and introduce desiderata for courses and the relevant subjects.



Introduction to the arrangement of sessions



Synchronization of sessions



Creation of groups of subjects for itineraries

The option exists to:

- Solve timetable problems of a course, even if these have not been defined
- Relate different subjects and their corresponding sessions without any limit in terms of teachers, rooms or courses.
- Be able to allocate an unlimited number of teachers and rooms to each session.

## Easy communication with your academic manager



It Calculates

Plant University informs you about your current academic manager by gathering all the information related to resources, preventing it from being introduced. This is done by creating an XML exchange file that enables us to gather the maximum amount of information that we have introduced in our academic manager.

We can in turn return the results obtained and feed any of our own applications that are in need of such information.



## Classroom management



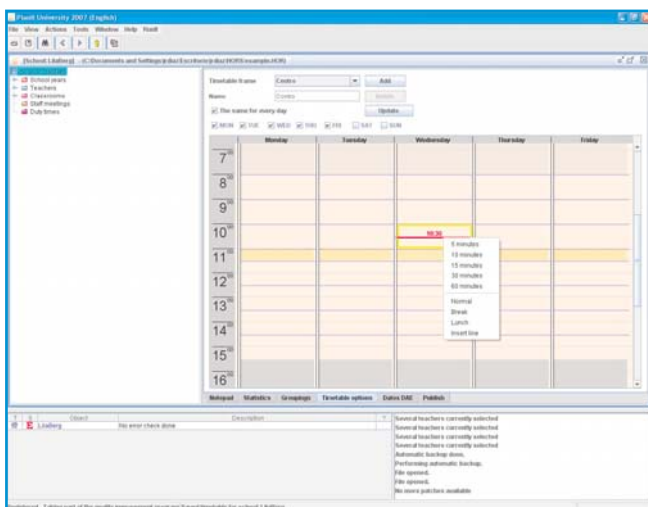
It Calculates

Dealing with the classroom timetable is optional. The user has many options at their disposal which will help them to manage these effectively. For instance, it is possible to introduce desiderata for assigned classrooms, according to their characteristics regarding capacity, availability, etc. Thus, the user may assign classrooms automatically.

## Greater flexibility when preparing timetables



It Calculates



Creation of timetable framework with different cells for each day

It enables as many timetable frameworks as are deemed suitable to be created and worked with. There must be at least one timetable framework shared by all courses. At least one timetable framework should be defined per level. One of the main features of Plant University is that the cells for each day in the timetable framework may be arranged differently; likewise, the duration of these cells may be defined according to minutes and also separately. The timetable framework editor guarantees this flexibility when designing timetables.

## Filing and printing of results



It Calculates

The data introduced and the results may be printed and saved in documents (for instance, in PDF) that may subsequently be printed, sent by email or stored, etc. These documents may contain timetables and lists of teachers, courses, classrooms, etc., selected by the user. It is possible to print from size DIN-A4 (folio) to DIN-A0 (poster), as well as personalizing the documents printed, including the University logo. These may be filtered so that only certain elements appear.

## The Solver



It Calculates

This is the key part of the programme for the purpose of detecting errors in terms of data and finding a suitable solution. It contains specific functions so that the user may quickly find the timetable, automatically locate errors or make use of the different options provided by the Solver.

- Further information regarding a description of results, enabling each error to be individually checked.
- While the Solver is activated and seeking the solution to an error, it provides statistical data.
- If any incompatibility appears, the Solver stops and describes what the problem is that is preventing it from proceeding.
- To make changes to an already completed timetable, the local Solver and the shift Solver may be interrupted.
- Always include all sessions and, if too many restrictions have been introduced, it will inform us that these are conflictive when dealing with the timetable.

## Automatic publication online



It Calculates

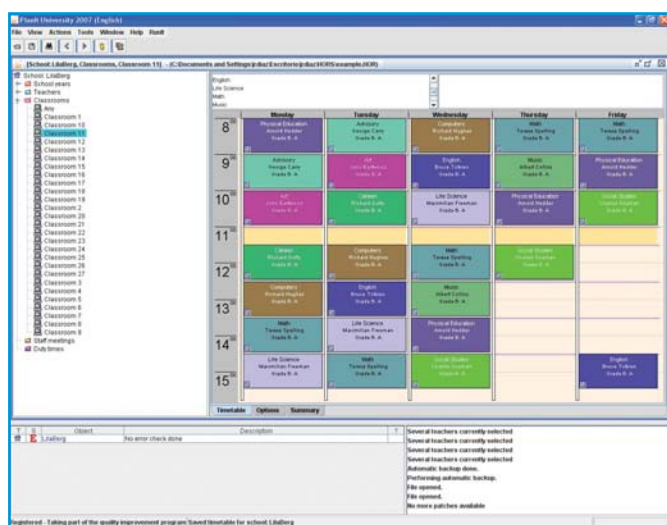
It provides results in HTML; so that these may be published on the Intranet or on the website of the centre instantaneously, in order for everyone to be able to consult them. This ensures time saving when distributing the information and also ensures a financial saving (in terms of photocopies), while at the same time access to information is immediate and correct. Publication may also be filtered.

# Examples of different timetable displays

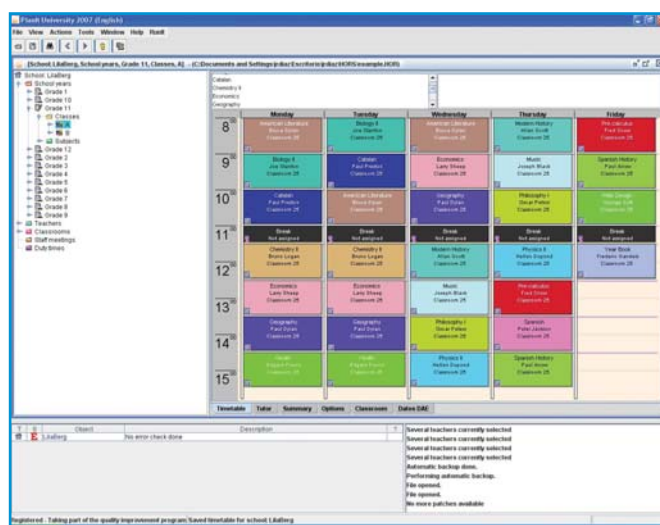


It Calculates

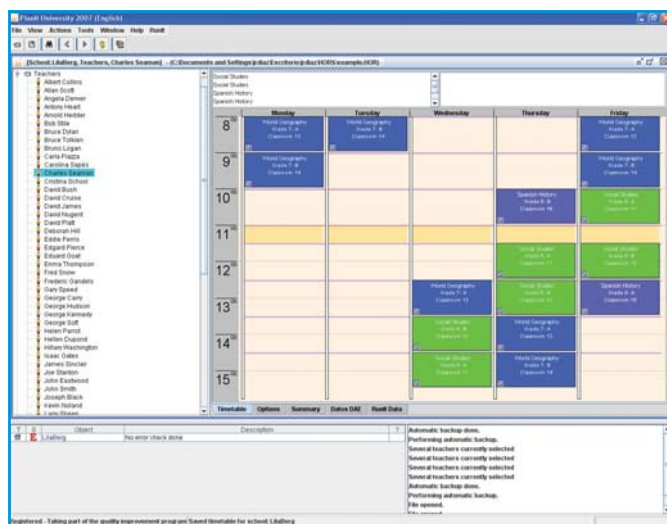
Four figures are shown below that contain information about timetables for a centre classroom and for a teacher. A further two display channels are the area of results and, after exporting the data to HTML format, the Internet browser is available to the user.



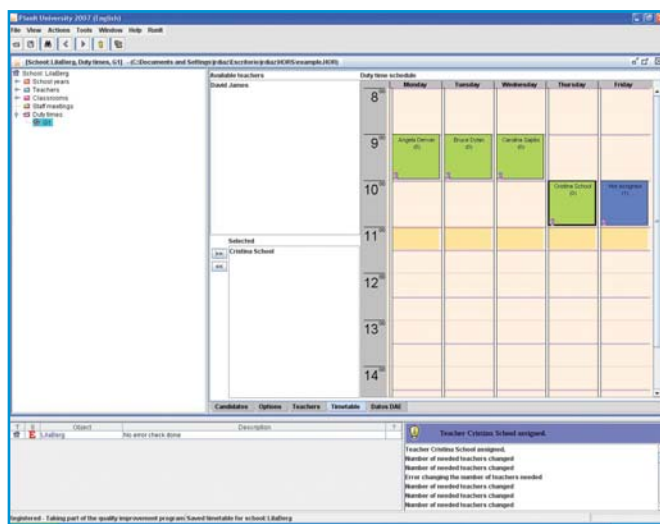
Solution to the timetable for a classroom



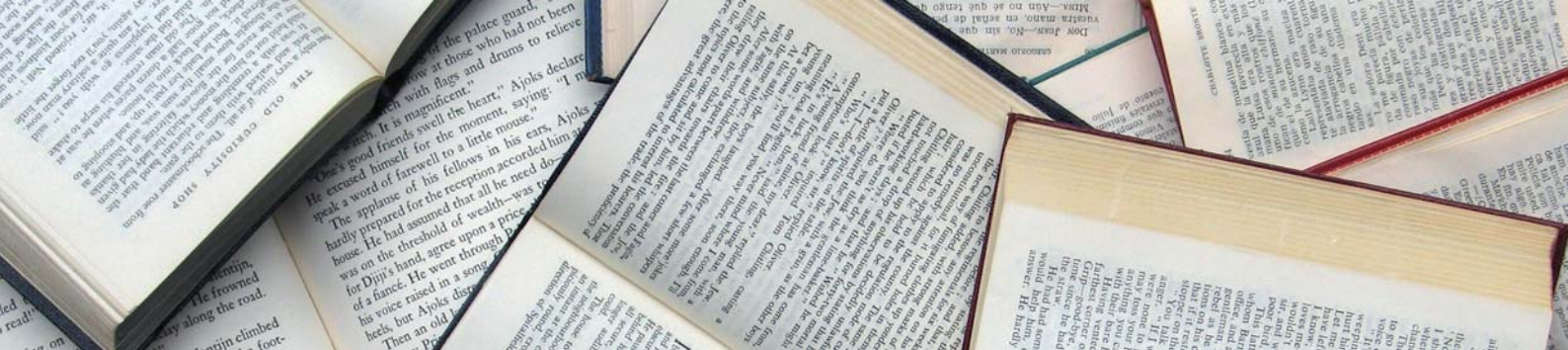
Solution to the timetable for a course



Solution to the timetable for a teacher



Solution to the timetable for a shift



# It manages

Planit University enables us to consult the timetables in real time of any of the resources of each of the courses, faculties, campuses or university. It enables us to manage these resources by requesting that they be reserved, informing us of the procedures to follow in order to occupy any of the resources (teachers, classrooms) and where to relocate them, informing us of those that are available. Its possibilities do not end there, as it can also communicate with other applications such as a smart application that may control the heating or lighting in a building, faculty, campus or in the whole university.

## Display timetables



This function enables us to display the timetables each week in real time of the different resources, reflecting in real time the changes made by management of such resources.

Monday 26/11/2007	Tuesday 27/11/2007	Wednesday 28/11/2007	Thursday 29/11/2007	Friday 30/11/2007
08:00 English	Physical Education	Advisory	Advisory	Earth Science
08:30 Physical Education	World Geography	Catalan	Art	Physical Education
09:00 Physical Education	World Geography	Computer	Earth Science	Computer
09:30 Music	Advisory	Computer	Earth Science	Computer
10:00 Physical Education	Advisory	Computer	Earth Science	Computer
10:30 Physical Education	Advisory	Computer	Earth Science	Computer
11:00 Physical Education	Advisory	Computer	Earth Science	Computer
11:30 Physical Education	Advisory	Computer	Earth Science	Computer
12:00 Physical Education	Advisory	Computer	Earth Science	Computer
12:30 Physical Education	Advisory	Computer	Earth Science	Computer
13:00 Physical Education	Advisory	Computer	Earth Science	Computer
13:30 Physical Education	Advisory	Computer	Earth Science	Computer
14:00 Physical Education	Advisory	Computer	Earth Science	Computer
14:30 Physical Education	Advisory	Computer	Earth Science	Computer
15:00 Physical Education	Advisory	Computer	Earth Science	Computer

Classroom timetable

Monday 26/11/2007	Tuesday 27/11/2007	Wednesday 28/11/2007	Thursday 29/11/2007	Friday 30/11/2007
08:00 Science	Science	Science	Science	Science
08:30 Science	Science	Science	Science	Science
09:00 Science	Science	Science	Science	Science
09:30 Science	Science	Science	Science	Science
10:00 Science	Science	Science	Science	Science
10:30 Science	Science	Science	Science	Science
11:00 Science	Science	Science	Science	Science
11:30 Science	Science	Science	Science	Science
12:00 Science	Science	Science	Science	Science
12:30 Science	Science	Science	Science	Science
13:00 Science	Science	Science	Science	Science
13:30 Science	Science	Science	Science	Science
14:00 Science	Science	Science	Science	Science
14:30 Science	Science	Science	Science	Science
15:00 Science	Science	Science	Science	Science

Teacher timetable

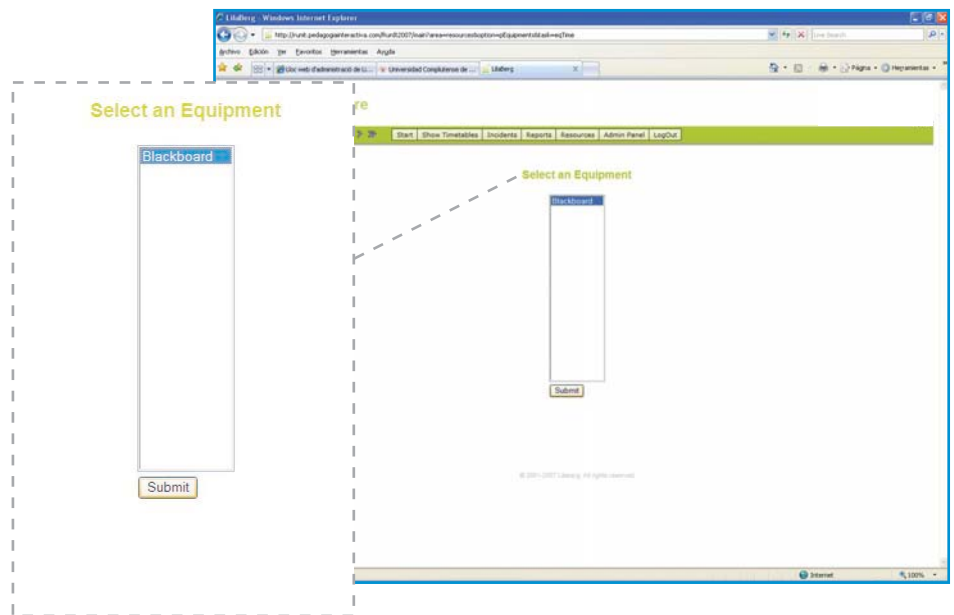


## Reserve equipment



It Manages

This function enables us to reserve any equipment for a class (DVD, video, projector, digital whiteboard, etc.), informing us at all times of the state and availability of each for that class.

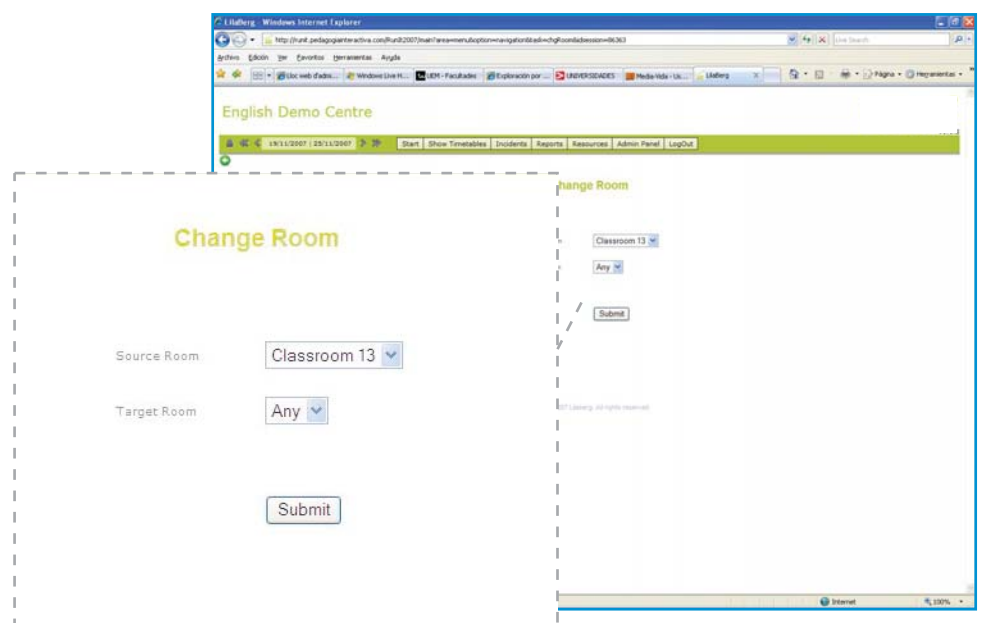


## Change classrooms



It Manages

When we calculate the timetable for each course or teacher session, we set aside a specific classroom for all the sessions that make up the schedule. If we need to exchange classrooms on a specific day, Plant University tells us which classrooms are free precisely at that time and allows us to make a change for that specific day, leaving the original classroom free for the other days.



## Creation of events



It Manages

Plant University enables us to create specific events that occur each day, such as excursions, workshops and meetings, etc., and from that moment, to know how to manage that event. It shows us how to replace a teacher if we need to do this, and if a classroom is taken, it tells us which classrooms are available.

**Add Event**

Name:

Type: Meeting

Start Date: 07/02/2008 00:00

End Date: 07/02/2008 23:00

Comment:

Professors:

- Arrow, Paul
- Balaguer, Laura
- Beddingfield, Natasha
- Carry, George
- Collins, Albert
- Denver, Angela
- Down, Clara
- Duffy, Richard
- Dylan, Bruce
- Esquivel, Estefania

Groups:

- Grade 1 A
- Grade 10 A
- Grade 11 A
- Grade 12 A
- Grade 2 A

## Management of teacher absence



It Manages

This function enables us to manage any absences and replacement of staff in a dynamic way. If a teacher is unable to give a class for any reason (illness, personal matters, licence, etc.), the person in charge introduces the absence for that teacher and the system then provides them with the following possibilities:

- It displays a list of teachers who are free to cover the gap created by that teacher in those classes.
- A reading for the following fortnight is provided for those classes and solutions involving an exchange of class are given.
- Cancel the class.

**Absence Details**

Select Absence | Edit Absence

Name: Arrow, Paul  
Type: Sickness  
Start Date: 7/2/2008 00:00  
End Date: 7/2/2008 23:00  
Resources: Arrow, Paul  
Collisions:

Date	Time	Class	Action
7/2/2008	13:30-14:30	Grade 11 A	Cancellation   Accept
7/2/2008	14:30-15:00	Grade 12 A	Substitution (L) Balaguer, Laura   Accept
7/2/2008	08:00-9:00	Grade 12 B	Substitution (L) Balaguer, Laura   Accept
7/2/2008	10:00-11:00	Grade 9 A	Cancellation   Accept
7/2/2008	11:30-12:30	Grade 9 B	Cancellation   Accept

(L) Free professor  
(O) Professor with standby  
(R) Professor with meeting  
(C) Professor with cancelled session

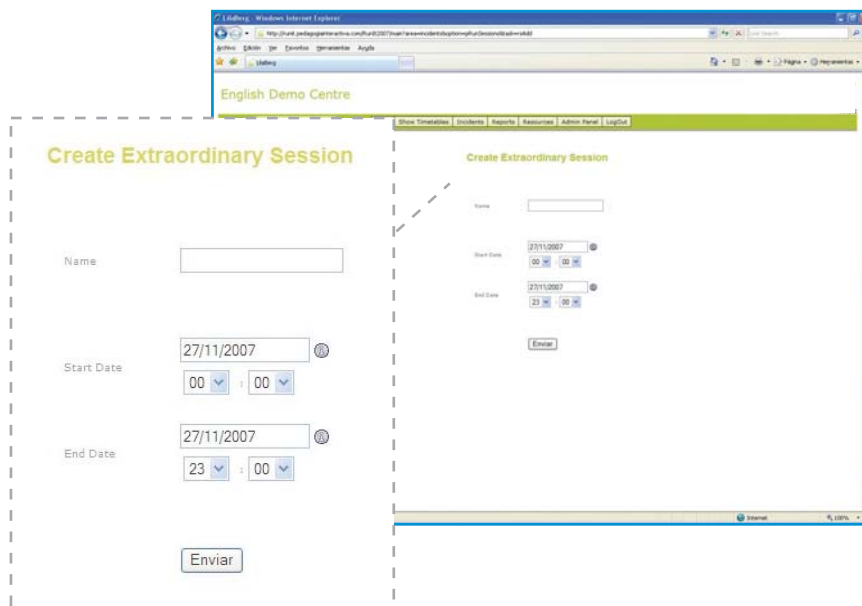


## Extra sessions



It Manages

This function enables us to be aware at all times which shared resources are available on a specific day and at a specific time, which teacher, which equipment, which rooms are being used and which ones are free for this extra session.



## Consultation displays



It Manages

This function enables us to consult information in real time as to the state and extent to which each resource is occupied (classrooms, projectors, DVDs, interactive screens, etc.), as well as the situation regarding the replacement of teachers or staff from the centre.

